



## PRO MULTI CUTTER USER GUIDE

9" / 23 cm.

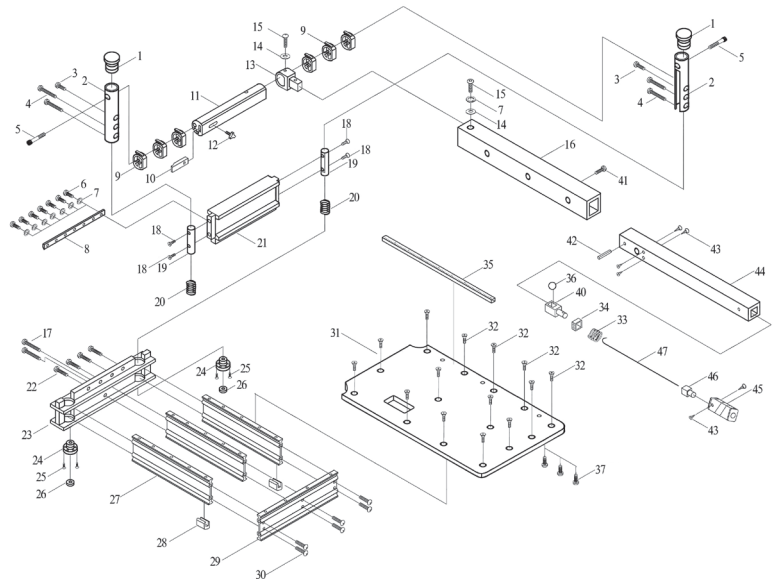
PH-809

Read before use! Warning: failure to follow these rules may result in serious injury! Using this machine with respect and caution will considerably lessen the possibility of personal injury.

1. Read and understand this instruction manual before operating.
2. Stay alert. Do not operate while under the influence of drugs, alcohol, or medication.
3. Always wear safety approved eye protection with side shields.
4. Keep work area free and clean of debris.
5. Keep children and unauthorized persons away from laminate cutter and the work area.
6. Make sure tool is secure. Operate only on a firm substrate or solid stand.
7. Use the right tool. Do not force the cutter or use it for a job for which it was not intended. This tool is designed to cut: residential grade/low-pressure laminate flooring, engineered wood flooring, vinyl composite tile, PVC tile, fiber cement board siding, vinyl siding, and pressboard lab siding. \*see cut guide.
8. Keep blade sharp. A dull blade will not perform properly.
9. Always keep hands away from blade while operating or carrying.
10. Do not alter or misuse this tool. It is precise built; modifications not specified in this manual may result in dangerous condition.
11. Maintain with care. Follow instructions for cleaning, lubrication and changing accessories.
12. Use only recommended accessories. The use of improper accessories may cause hazards or injury.
13. Never leave the cutter unattended. Secure the handle with the safety lock when not in use ( see Making Cuts).
14. Warning: the dust generated by cutting certain wood, wood fiber and/or PVC products can be injurious to your health. The laminate cutter generally does not produce any dust; however, minimal creation of dust may be possible. Avoid ingesting any dust created through cutting.

## IN THE BOX:

Your laminate cutter ready to easily assemble\*.



#	Name	Pcs.	Specifications	#	Name	Pcs.	Specifications
1	Plastic end cap	2		27	Worktable support	3	560.5*50*9
2	Guide sleeve	2	Ø30.08*188	28	Black cushion	2	18.5 x 15 x 35
3	Phillips screw			29	Worktable foot	1	9 x 50 x 382
4	Hexagon socket head cap screw	4	M6 x 60	30	Phillips screw	6	M6*35
5	Bolt	2	M10*70*34	31	Worktable	1	394*590
6	Hex. screw	8	M6*12	32	Phillips screw	14	M4 x 12
7	Spring washer	8	Ø6	33	Spring	1	Ø13 x Ø16 x 30 x 8
8	HSS blade	1	330*28	34	Spring cushion	1	20.5 x 20.5 x Ø11.5
9	Cam	6		35	Angle pointer	1	
10	Stop block	1	124*17.6*7.6	36	Steel ball	1	Ø8
11	Cam shaft	1	340*39*	37	Furniture nut	2	M6 x 8
12	Stop knob	1	M6*10*25	38	Dial	1	160*87*1
13	Reinforce cam sleeve	1	46 x 50 x 25 x 25	39	Stop knob	1	M6*10*30*
14	Washer	5	Ø6 x Ø13	40	Black plastic slider	1	20 x 25 x 64
15	Hexagon socket head cap screw	2	M6 x 20	41	VØ5 Spring	1	
16	Square handle - outer	1	30 x 38 x 475	42	Ø3 x 18 Lock pin	1	
17	Phillips screw	2	M6*50	43	Phillips screw	6	Ø3 x 10
18	Phillips screw	4	M5*15	44	Square handle - inner	1	25 x 29 x 570
19	Guiding rod	2	Ø20.06*50	45	Plastic sleeve	1	33 x 37 x 112
20	Spring	2	Ø2.5*10Ø19*53	46	Handle knob	1	20.5 x 20.5 x Ø14 x 32
21	Upper body	1	430*58*40	47	Push bar	1	Ø3 x 465
22	Phillips screw	4	Ø5 x 30		8mm Allen Key	1	8MML
23	Lower body	1	364*62*31		4mm Allen Key	1	4MML
24	Adjust plate	2	Ø58*16				
25	Phillips screw	4	M5*20				
26	Rubber foot	2	Ø32*5				

## PRO MULTI CUTTER USER GUIDE

9" / 33 cm.

PH-809

### BLADE ADJUSTMENTS

#### Honing the Blade:

Push the handle down until blade is 6mm / 1/4" open. Lay a flat face of the hone stone against the blade and slide from end to end 2 to 3 times. This removes the small burr formed when cutting hard products.

#### Blade Sharpening & Blade Replacement:

The blade can be sharpened several times before a replacement blade is necessary.

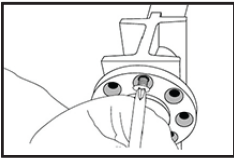
### CUT GUIDE

#### CAUTION! USE HAND PROTECTION!

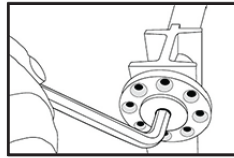
Your tool cuts a wide variety of products. Please refer to this cut guide for recommended products and thickness:

Laminate Flooring (direct pressure/residential grade).....	15mm or 9/16"
Engineered Wood.....	10mm or 3/8"
Parquet.....	12mm or 1/2"
PVC Tile.....	12mm or 1/2"
Vinyl Composite Tile.....	12mm or 1/2"
Rubber Tile.....	15mm or 9/16"
Carpet Tile.....	12mm or 1/2"
Soft Plastic.....	12mm or 1/2"
Leather.....	15mm or 9/16"
Cork.....	15mm or 9/16"
Wood Siding.....	15mm or 9/16"
Fiber Cement.....	15mm or 9/16"

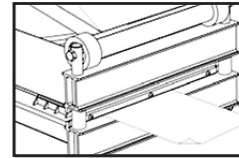
### BLADE ADJUSTMENTS INSTRUCTIONS:



1. Unscrew and remove the adjustment plate screw



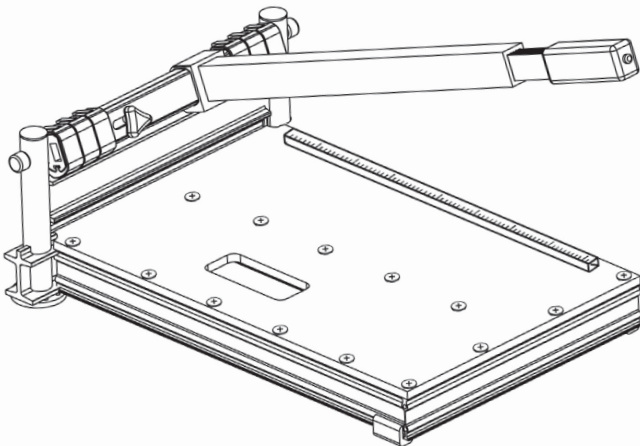
2. Tighten both adjustment plates by 1 or 2 holes. Note! The pitch on each lifting screw is 0.125mm. The adjustment on both plates must be the same.



3. Cut a piece of paper to ensure the tool is set correctly.

### MAKING CUTS:

Caution! Ensure hand and eye protection are worn while operating



**1.**

While gently pushing the handle down, slide safety lock in, then lift handle.

**2.**

Place material to be cut on table. Bring handle down until blade touches material. Warning! Blade is very sharp. Keep fingers away from blade.

**3.**

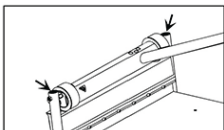
Push handle down completely to cut through material.

**4.**

Safety lock should be put in the locked position after you finished the job.

**Warning! Disabling reset function on safety lock is potentially hazardous.**

### IMPORTANT:



After every 500 cuts, it is recommended that you lubricate the guiding sleeve with 10W-30 motor oil from top after removing the black caps. This will prevent premature wear-out of machine.